

Parkheath

Sold on Service

Goldhurst Terrace NW6

£2,950 PCM (£681 per week) - Camden Band F



Two double bedroom apartment

First floor of a period conversion

Spacious reception/dining room with wood flooring

Bedrooms with built-in storage

Approx. 10-minute walk to Finchley Road Underground Station

901 sq ft / 83.70 sq m

South Hampstead Conservation Area

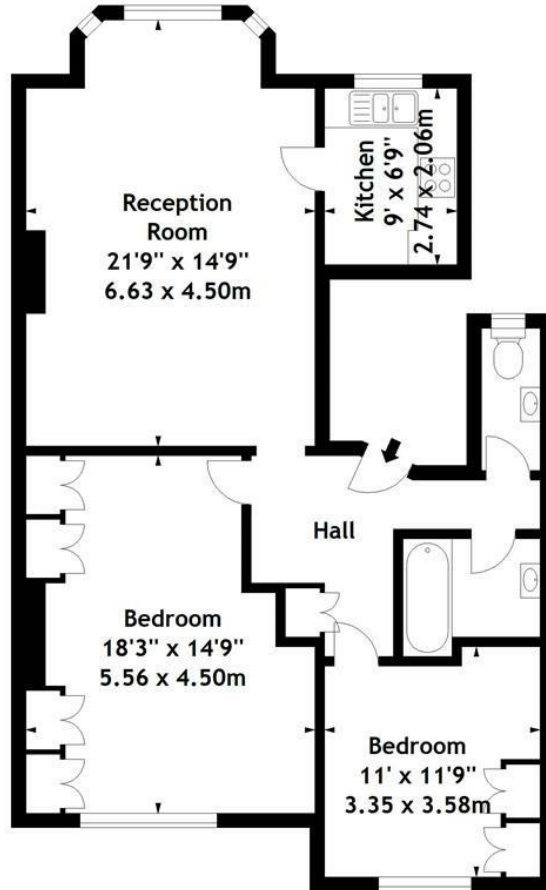
Separate fitted kitchen

Own section of basement storage

EPC: Rating D, Council Tax: Camden, band F

West Hampstead Office 020 7794 7111

Goldhurst Terrace, NW6
Approx. Gross Internal Area
901 Sq Ft - 83.70 Sq M



First Floor

Measured in accordance with RICS guidelines. Every attempt is made to ensure accuracy, however all measurements are approximate. This floor plan is for illustrative purposes only and is not to scale.
© Datography Ltd 2015
Photographs * Floorplans * Virtual Tours
Tel: 0845 643 4401 www.datography.com

The particulars do not constitute part of an offer or contract. The particulars, including text, photographs and plans, are for the guidance only of prospective purchasers/tenants and must not be relied upon as statements of fact. The descriptions provided therein represent the opinion of the author and whilst given in good faith should not be construed as statements of fact. Nothing in these particulars shall be deemed a statement that the property is in good condition or otherwise or that any services or facilities are in good working order. All measurements are approximate